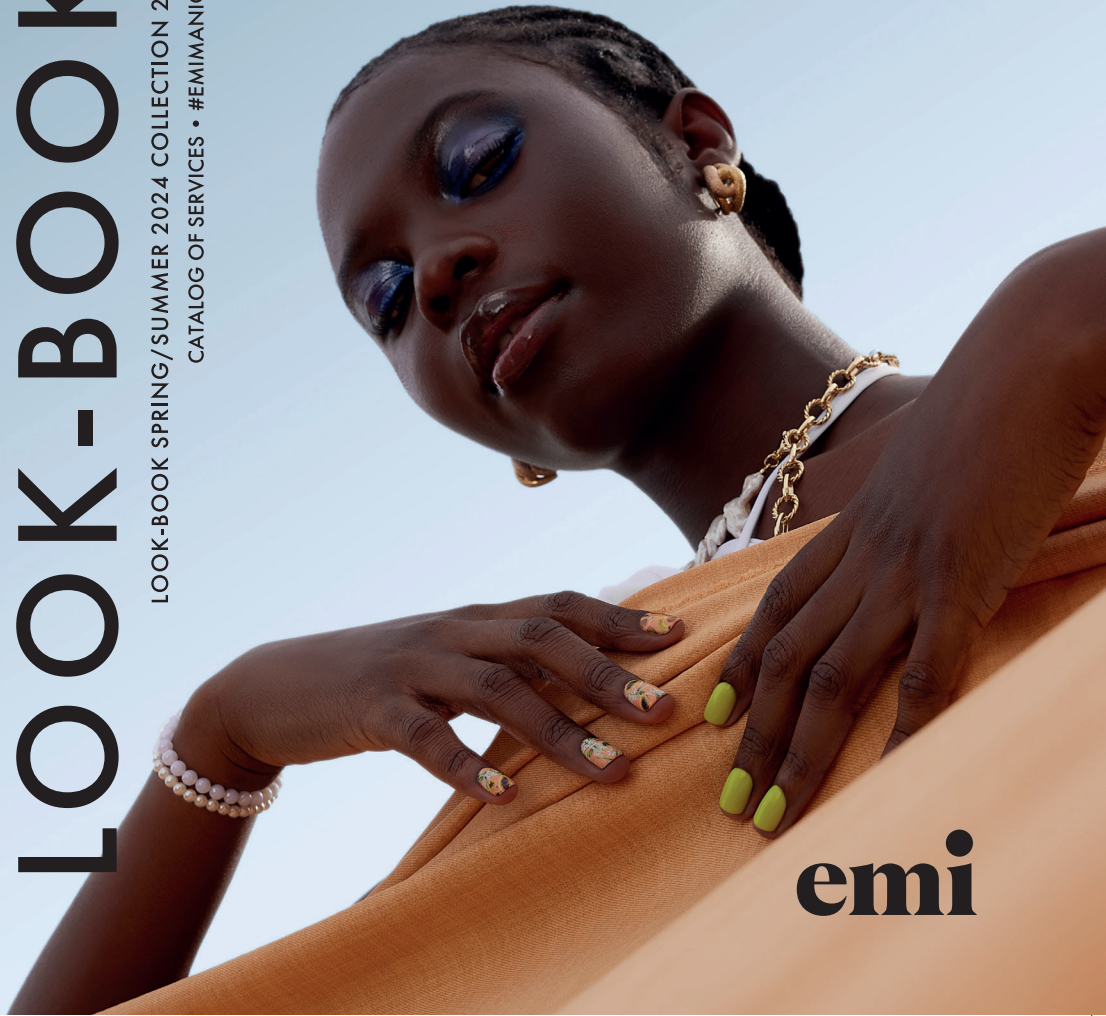


# LOOK-BOOK

LOOK-BOOK SPRING/SUMMER 2024 COLLECTION 2024  
CATALOG OF SERVICES • #EMIMANICURE



**emi**

# HUNTING SEASON

Safari aesthetics bring a substantial amount of gabardine and animalistic prints to the spring-summer 2024 season. For example, Balmain's creative director takes inspiration from life (and prints), offering python in three different color variations in a single look.

E.MiLac 440 Oasis  
Multiple Design Gel  
Foil glossy Noble Gold  
Gel Paint Black Tulip



E.MiLac 001 White Lotus  
Texture paint No wipe 002 White  
E.MiLac 183 Aqua Green  
E.MiLac 226 Chicago Spirit  
Stamping Plate 06 Prints  
Empasta Black Tar, Multiple Design Gel  
Foil glossy Noble Gold



E.MiLac 389 Swish of Silk  
E.MiLac 226 Chicago Spirit  
Stamping Plate 06 Prints  
Nail Polish for Stamping 02 Black  
Multiple Design Gel  
Foil glossy Noble Gold  
Gemty Gel Clear, Nail Studs Gold



E.MiLac 413 Breakfast at Tiffany's / 473 Fair Wind  
Stamping Plate 06 Prints  
Nail Polish for Stamping Black 02  
Multiple Design Gel  
Foil matte Blood Red  
Charmicon 252 Savanna





E.MiLac 468 Pink Horizon, E.MiLac 470 Feather Grass, Nail Polish for Stamping 02 Black and 05 Yellow, Nail Polish for Stamping 07 Pink, Stamping plate 15 Magic of Nature



E.MiLac 030 Black Gloss, Naildress 128 Flight of Fancy, Charmicon 234 Summer Day



E.MiLac 469 Siesta Hour, E.MiLac 473 Fair Wind, Naildress 133 Tender Message

# FLOWER SHOP

It's impossible to imagine the spring-summer season without flowers: that timeless print that will never go out of style and is unlikely to ever leave the women's wardrobe. Highly relevant in 2024 are 3D flowers.



E.MiLac 347 All-in  
Naildress 128 Flight of Fancy  
Charmicon 228 Italics, Charmicon 252 Savanna  
Gemy Gel Clear

E.MiLac 474 Siren Song  
 Pigment Mermaid Tail 204  
 Naildress 129 Infinity  
 E.MiLac Scandium Top Gel  
 Foil glossy Silver  
 Multiple Design Gel  
 Gemty Gel Clear

# LIQUID METAL

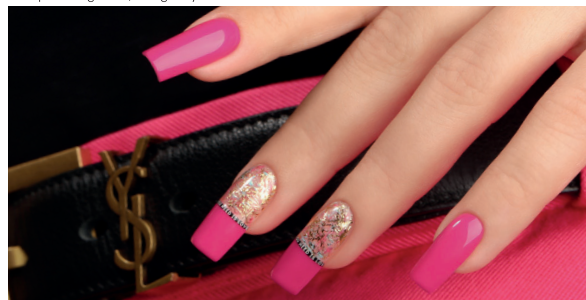
Metallic is no longer just a trend; it's a fashion constant. Sparkle is everywhere: rhinestones, sequins, metallic decor, shiny fabrics. Gold, silver, gemstones... You can have it all at once.



E.MiLac 475 Lime Splash, Pigment Mermaid Tail 204, Stamping Plate 17 Oceanica  
 Nail Polish for Stamping 09 Light Green, Charmicon 252 Savanna / 249 Grace  
 Gemty Gel Clear



E.MiLac 442 Sunkissed, Stamping Plate 13 Textures  
 Multiple Design Gel, Foil glossy Gold



E.MiLac 381 Shy, E.MiLac 413 Breakfast at Tiffany's  
 Charmicon 240 Beauty in Details, Foil glossy Noble Gold





E.MiLac 001 White Lotus, E.MiLac 473 Fair Wind, Stamping Plate 17 Oceanica  
Nail Polish for Stamping 01 White, Naildress 129 Infinity, Charmicon 250 Reef  
Charmicon 252 Savanna, Charmicon 234 Summer Day



E.MiLac 469 Siesta Hour, E.MiLac 473 Fair Wind  
Charmicon 251 Maldives, Charmicon 252 Savanna



E.MiLac 372 Give Love, Charmicon 234 Summer Day, Naildress 129 Infinity  
Empasta Castanea, Genty Gel Clear, Hilly Gel Paint 002 White  
Empasta Cranberry Red, Empasta Yellow Corn

E.MiLac 001 White Lotus  
Multiple Design Gel  
Foil glossy Silver  
Nail Studs



## MERMAID'S SONG

Everything that refers to the enchanting underwater world of mermaids continues to delight fashionistas worldwide. Mother-of-pearl and glitter, flowing fabrics and fluid silhouettes, chiffon, pearl threads woven into hair accessories – this is how we see the "mermaid" trend of the season.



# 50 SHADES OF WHITE

In spring and summer 2024, attention should be focused on white, which is no longer just a bridal shade. Designers suggest dressing in total white with snow-white suits, accessories, and headwear for the upcoming season.

E.MiLac 001 White Lotus  
Hilly Gel Paint 002 White  
Multiple Design Gel  
Foil glossy Noble Gold



E.MiLac 152 Sparkly Beige  
E.MiLac 414 Comomile Field  
Naildress 124 East



E.MiLac 389 Swish of Silk  
Stamping Plate 12 Flower Garden  
Nail Polish for Stamping 01 White, Charmicon 235 Chance



E.MiLac 364 Cotton, Foil glossy Silver  
Naildress 132 Waltz of the Flowers  
Multiple Design Gel, Rhinestones 03 White Opal



E.MiLac 473 Fair Wind, Naildress 134 Vitamin Boost, Charmicon 252 Savanna

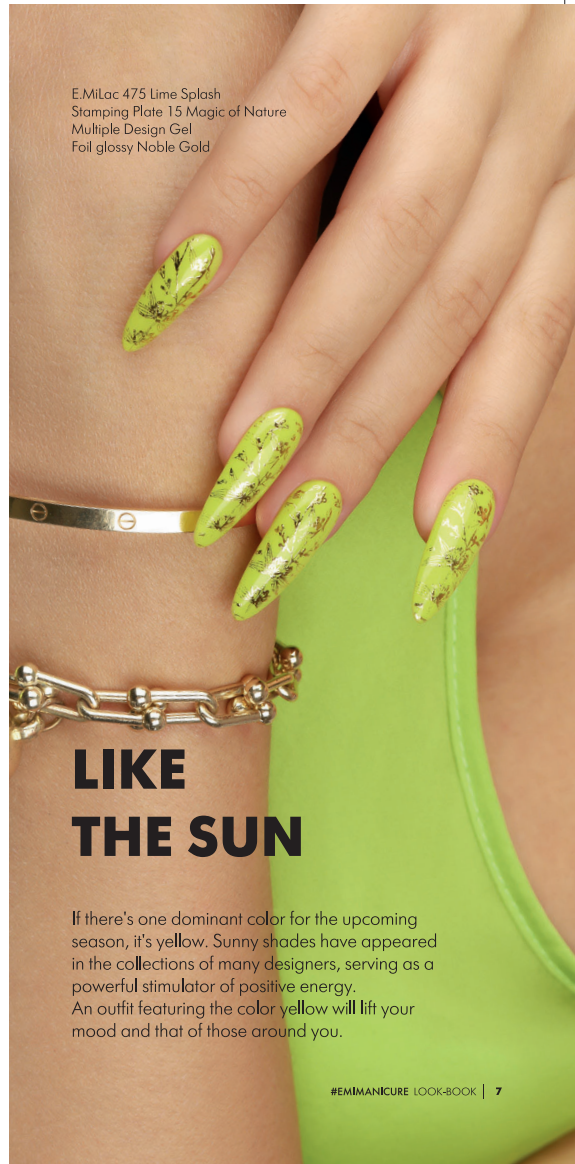


E.MiLac 414 Camomile Field, Naildress 130 Bright Life, Gemty Gel Clear



E.MiLac 468 Pink Horizon / 472 August Heat / 474 Siren Song / 475 Lime Splash  
Stamping Plate 15 Magic of Nature  
Nail Polish for Stamping 01 White / 02 Black, Charmicon 253 Fly

E.MiLac 475 Lime Splash  
Stamping Plate 15 Magic of Nature  
Multiple Design Gel  
Foil glossy Noble Gold



## LIKE THE SUN

If there's one dominant color for the upcoming season, it's yellow. Sunny shades have appeared in the collections of many designers, serving as a powerful stimulator of positive energy. An outfit featuring the color yellow will lift your mood and that of those around you.



## **MANICURE + NAIL POLISH**

---

### **DURABILITY 10 -14 DAYS**

---

### **MANICURE SESSION LENGTH 1 HOUR**

---

### **BEAUTIFUL NATURAL LOOKING NAILS FOR 10 DAYS**

Have strong and healthy nails, and looking for a long-lasting glossy coat?

With Ultra Strong Nail Polish Gel Effect will last more than a week, and you can easily change the color of your nail coating anytime you want, not only at a salon but also at home!

#### **COLOR + PROTECTION**

The everlasting shine system is activated by sunlight. The reaction of both the UV-polymer contained in the nail polish and the photoinitiator in the outer coating interacts with daylight and makes the coating even stronger day after day.

#### **ULTRA-STRONG NAIL POLISHES WITH GEL EFFECT IN MORE THAN 100 SHADES**

gel effect in 10 minutes without the need to use a lamp;  
long-lasting nail coating without chips or microcracks for up to 10 days;  
new shades every season.





## **MANICURE + GEL POLISH/ GEL STRENGTHENING**

---

**DURABILITY**  
**4-5 WEEKS**

---

**MANICURE SESSION**  
**LENGTH 1.5 HOURS**

---

**LONG-LASTING MANICURE  
FOR UP TO 1 MONTH!**

Are you setting a high value on long-lasting manicures and naturally looking nails?

Tired of dealing with constant chips and microcracks?

Do you dream of having the nail shape and length you've always wanted?

Manicures with gel polish/gel strengthening system have been designed especially for you!

Enjoy perfectly strong and natural-looking nails with an ultra-glossy coating applied very close to the nail cuticles and stylish decorations!

**STRENGTHENING  
AND RECOVERY  
OF NATURAL NAILS**

- 100% self-modeling;
- fast and easy-to-do treatment;
- naturally looking nails.

## PRICE OF A NAIL ART DESIGN DEPENDS ON ITS COMPLEXITY



## PRICE OF A NAIL ART DESIGN DEPENDS ON ITS COMPLEXITY





# HOMEMADE MANICURE

## WITH E.MILAC GEL EFFECT YOUR HANDS ARE ALWAYS HEALTHY AND BEAUTIFUL

1. Use the Pink Nail File for natural nails or Crystal Nail File EMI to shape the nail free-edge.
2. Apply E.MiLac Cuticle Remover on the nail cuticles.
3. After 2-3 minutes, remove the rough skin using a wooden nail stick.
4. Rinse under running water using a brush.
5. Degrease with EUROCLEANSER LUX.
6. If the nails are delaminated or damaged, apply the strengthening Ultra Strong Base Coat Gel Effect. Allow 5–10 minutes to dry.
7. Apply the colored nail polish E.MiLac Gel Effect. Allow 5–10 minutes to dry.
8. Apply Ultra Strong Top Coat Gel Effect. Allow 5–10 minutes to dry.
9. Moisturize cuticles with E.MiLac Cuticle Oil.

### emi 180/240

#### 1 PINK NAIL FILE 180/240

with just the right amount of softness, this nail file is perfect for the natural nails; it does not damage the nail plate.



#### 2 CUTICLE REMOVER

intensively softens the nail cuticles, slows down their growth, improves the structure of the nail.



#### 3

#### NAIL STICK

gently removes the rough skin, and pushes the nail cuticles back.



#### 5

#### EUROCLEANSER LUX

degreasing/cleansing the nail plate before applying a coating is an essential step.



6

#### ULTRA STRONG BASE COAT GEL EFFECT

is the base coat for the long-lasting nail polish manicure.



7

#### E.MILAC GEL EFFECT

is a saturated long-lasting color coating.



#### HAND CREAM AND LOTION

Enveiling texture. Moisturizing and nourishing. Instantly absorbed. The skin is filled with radiance.



#### ANTIFUNGAL

recovers the nails affected by onycholysis (subungual pockets); protects from fungus.



8

#### TOP COATS

fixate a color coating, prevent chipping, and extend the wear of a color coating.



#### INTENSE CARE

a nail intensifier that promotes the growth of strong and healthy nails while providing a matte finish.



9

#### CUTICLE OIL

moisturizes and recovers, quickly absorbs, and gives the nail cuticles an aesthetically beautiful look.



#### NAIL STRENGTHENER NATURAL FORCE

is the hedling nail coating with 80% of plant ingredients. An intensive therapy for a full recovery of delaminated and damaged nails in 8 weeks.

#### NAIL POLISH/GEL POLISH REMOVER

delicately soaks a nail coating off and does not dry the skin.



#### CHARMICON

are soft silicone stickers for nail designing.





# PEDICURE LINE

## FOOT BATH GEL

Gentle cleansing  
300 ml

Cleanses, softens, and nourishes foot skin. It prepares feet for pedicure by cleaning and disinfecting, and can also provide a light exfoliation. The gel improves skin texture, restores hydro balance, reduces foot odor, and leaves a pleasant fragrance on the feet.



## CRACK TREAT CREAM

Feet skin repair  
300 ml

Effectively repairs chapped feet with its blend of urea, glycerin, and nourishing oils. It deeply nourishes damaged skin, promoting regeneration and healing in just 4 days, providing care for problem heels.



## EXFOLIATING GEL

Exfoliating  
100 ml

Keratolytic-based product with urea, glycerin, and lactic acid. Gently exfoliates, removes corns and calluses, providing long-term smoothness and hydration after a pedicure. Suitable for sensitive skin, with an economical gel texture for a well-groomed look and increased elasticity.



## ANTIFUNGAL FOAM CREAM

Fungal diseases preventing  
125 ml

Gently prevents the growth of pathogenic bacteria and fungus, softening and regenerating the skin. Provides light and non-greasy care while preventing fungal diseases.



## EXFOLIATING FOAM

Soft exfoliating  
150 ml

Urea-based exfoliating foam for long-term skin smoothness and hydration. Gently exfoliates, prevents peeling and drying, reduces irritation, and suitable for sensitive skin. Easy application with a gentle texture.



## FOOT DEODORANT POWDER

Refreshing and cooling talc  
150 g

Keeps feet cool, dry, and odor-free for extended periods. It neutralizes unpleasant odors, prevents excessive sweating, and is easy to apply as a powder. Suitable for all skin types, it provides long-lasting freshness.



# COLLAGEN SOCKS AND GLOVES

## ACTIVE COMPONENTS INCLUDED IN THE MOISTURIZING ESSENCE:

- ✓ **HYDROLYZED COLLAGEN** provides elasticity to the skin, maintains its tone, forms a protective film to prevent moisture loss, and promotes skin regeneration.
- ✓ **GLYCERIN** effectively solves the problems of dry skin, promotes the penetration of moisture into the deeper layers, moisturizes, nourishes, softens and smoothes the skin, restoring the hydro-lipid balance.
- ✓ **SHEA BUTTER** has rejuvenating and antioxidant properties, slows down skin aging, protects against UV rays, effectively combats dryness, flakiness, rough skin, and prevents dehydration and dryness.
- ✓ **ARGAN OIL** has moisturizing, nourishing, and anti-inflammatory effects, restores the skin's hydrolipid layer, increases its firmness and elasticity, protects against UV radiation, and promotes skin renewal and rejuvenation.
- ✓ **UREA** provides a noticeable softening and moisturizing effect, initiates cell regeneration, and prevents the skin from drying out.

### HOW TO USE:

1. Put on gloves/socks on clean, dry skin, securing them with the provided adhesive tape.
2. Remove the tips of the gloves/socks at the perforation line, exposing the nails for a manicure/pedicure procedure.
3. After the procedure is complete, remove the gloves/socks, massage any remaining essence into the skin, and remove excess with a damp cloth or rinse off.

When using at home, removing the tips of the gloves/socks at the perforation line is not necessary. To achieve the desired effect, the gloves/socks should be worn for at least 20 min.







# SKIN YOGURT SKIN PUDDING

Indulge in the airy textures that effortlessly absorb into your skin, leaving it velvety soft and nourished. With various valuable ingredients and aromatic scents that tempt the senses, you'll find the perfect match for your skin type and mood.

✓ RAPID ABSORPTION

✓ TONE ALIGNMENT

✓ BENEFICIAL FORMULA

glycerin, d-panthenol,  
aloe vera, vitamin E,  
mango butter



MOJITO & MINT

Awakens a mood of refreshing vitality and tropical escape.



BUBBLEGUM

A vibrant and energetic vibe, filling the air with a sweet and captivating aura.



BLUEBERRY

Invigorating freshness that immerses you in the essence of sun-kissed blueberry fields.

# MASSAGE CANDLES

Massage oil candles are cosmetic SPA products in the form of scented candles. The melted soy wax is used for a full-body massage, making it an excellent conclusion to manicure and pedicure procedures and effective as a base for foot polishing during machine pedicures.

## AROMATHERAPY

Deep and rich aromas of coffee, vanilla, and strawberry help create a delightful atmosphere, allowing you to enjoy manicure and pedicure procedures in an entirely new way. You can choose the aroma based on your mood!

## SAFETY

The wax has a low melting point, making it impossible to burn, and it does not cause irritation, making it suitable for all age groups.

## NATURAL COMPONENTS

Vitamin E, coconut and olive oils, as well as shea butter, contribute to maintaining skin firmness and elasticity, providing nourishing and moisturizing effects.

- ☒ COCONUT AND OLIVE OILS
- ☒ VITAMIN E
- ☒ SHEA BUTTER



# NAIL BOMB

## NAIL AND SKIN JELLY CONDITIONER

***Quickly moisturizes and deeply nourishes, protecting from external influences. Restores the nail structure, providing strong, well-nourished, and healthy nail plates. Takes care of problem and dehydrated nails, preventing splitting and moisture loss.***

### CONTAINS:

- ☒ NATURAL ALOE VERA JUICE
- ☒ D-PANTHENOL AND GLYCERIN
- ☒ VITAMIN E
- ☒ WATER BASE

### HOW TO USE:

- When using the product as a mask, we recommend applying it to the nail plate and the skin around the nails, letting it absorb for 5-10 minutes. Massage the remaining product in with circular motions. No need to rinse off.
- If used in combination with a manicure procedure, including applying decorative coatings, remove any excess product, degrease, and thoroughly dry the nail plate.
- For home use, we recommend applying it once a week.

Not suitable for use with gel systems and E.MiLac Kera Base Gel.





# MYRRH FLUID

## NAIL GROWTH ACCELERATOR WITH MYRRH RESIN EXTRACT

***Nourishing care for nails with lavender oil.  
A helper for growing a healthy nail plate.***

### CONTAINS:

- ☒ MYRRH RESIN EXTRACT has anti-inflammatory and soothing properties.
- ☒ LAVENDER OIL delicately protects the nail plate from external irritants.

### HOW TO USE:

- Apply to prepared nail plate as a base for decorative coating or as a standalone treatment.
- For best results, apply the product in 2 layers.
- Recommended frequency of use at home is once a week. Before reapplication, remove the old coating using nail polish remover.



# THERAPY OIL

INTENSIVELY MOISTURIZING, RECOVERING OIL  
FOR THE PROBLEM DEHYDRATED NAIL CUTICLES  
AND THE DAMAGED NAIL PLATE

## COMPOSED OF 95.35% NATURAL INGREDIENTS

- ☑ Almond oil increases the skin firmness; nourishes and moisturizes, possesses regenerating properties, and improves the skin elasticity.
- ☑ Grape seed oil softens the skin, boosts metabolism in the cells, moisturizes and rejuvenates; this is a powerful antioxidant that protects the skin from the harmful effects of exposure to UV-rays.
- ☑ Orange oil moisturizes the nail cuticles, facilitates the synthesis of collagen, and stimulates the growth of the nails.
- ☑ Vitamin E protects the cells from a damage caused by the activity of free radicals.



# BOOST-THERAPY

## POLYMER BOOST-RECOVERY FOR THE NATURAL NAILS

### NAIL POLYMER BOOSTER

#### NAIL RECOVERY

Penetrates the nail plate, crosslinks forming a case frame, and locks the oils inside the nail.

Active ingredients are absorbed by the deep layers of the nail, softening, moisturizing, and nourishing the nail plate.

Recovers the nail structure, favors the strengthening and the growth of the nails



### NATURAL FORCE HEALING NAIL POLISH

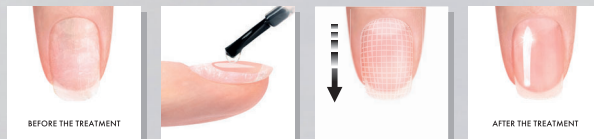
80% of plant ingredients aimed at moisturizing and nourishing.

Intensive therapy and full recovery for delaminated and damaged nails in 8 days.

Healing and protection for the natural nails.



## PROTECTION, STRENGTHENING, AND GROWTH





# EXPRESS HELPER

## NAIL SURFACE LEVELING NAIL POLISH

Thanks to its semi-transparent coating with a light pearlescent effect, this product is easy to apply and quickly fills in cracks, creating a fresh, well-groomed appearance.

It will be the perfect helper for those moments when you need to quickly tidy up the appearance of your nails and create a durable protective coating.

Provides a yellowing-neutralizing effect.

Suitable for home use and for salon clients.

### HOW TO USE

- Apply to dry, clean nails as a base coat under color or as a standalone coating.  
When used in conjunction with a manicure procedure that includes applying a decorative coating, residues of the product should be removed, and the nail plate should be degreased and thoroughly dried.
- For the best results, we recommend applying in 2 layers.
- In home conditions, it is recommended to use once a week.
- Removes with nail polish remover.

### PROPERTIES:

- ✓ PROTECTION AGAINST PEELING
- ✓ STRONGER AND MORE DURABLE NAILS
- ✓ WITHOUT LOSING ELASTICITY
- ✓ PROTECTION AGAINST DAMAGE
- ✓ YELLOWING NEUTRALIZATION EFFECT

Key active ingredients, such as vitamin E, calcium pantothenate (vitamin B5), and silicon compounds, protect the nails from peeling, making them stronger and more durable without losing elasticity. The 9Free formula makes it safe and protects natural nails from damage.

### CONTAINS:

- ✓ VITAMIN E
- ✓ VITAMIN B5
- ✓ 9FREE FORMULA







# ENERGY HARDENER

## 4-IN-1 NAIL STRENGTHENER

**Ideal for pedicures! Strengthens and protects while maintaining the natural flexibility of the nail plate. Dries quickly, giving a well-groomed, healthy appearance**

- Smoothens the surface
- Enhances the natural strength of nails
- Protects against splitting and breaking
- Provides a neutralizing effect for yellowing

### CONTAINS:

- ☒ NATURAL ALOE VERA JUICE
- ☒ D-PANTHENOL AND GLYCERIN
- ☒ VITAMIN E
- ☒ WATER-BASED

### HOW TO USE

#### For strengthening the nail plate:

- As a base coat under color – apply in 1 layer;
- As a standalone coating – apply in 2 layers (no need for a topcoat).

#### For restoring weakened and damaged nails:

- Weeks 1-2 – cover nails every day, removing the previous layer with nail polish remover;
- Weeks 3-4 – cover nails every other day, removing the previous layer with nail polish remover;
- After achieving desired results, use the product for prevention once or twice a month.





# CUTICLE & NAIL SORBET

CONDITIONER-SCRUB  
FOR CUTICLES WITH  
MICROGRANULES OF APRICOT KEEPS

Microgranules from apricot pits allow for the quick removal of cuticles due to their scrubbing effect. Panthenol and vitamin E in the formula make the skin around the nails more moisturized, protected, and healthy. Ideal for maintaining a well-groomed look of the nail plate and cuticles at home between procedures. Thanks to its gel-like consistency, it is easy to dispense and distribute, with an economical usage.

softens cuticles

panthenol

vitamin E

works as a remover

gently exfoliates

## HOW TO USE

- Apply Cuticle & Nail Sorbet to the cuticle and nail bed. Massage the nail plate and cuticle in circular motions to gently exfoliate the surface, push back the cuticle with an orange stick, and clean the nail bed.
- Remove residual apricot pit microgranules with a dry tissue.
- No need to rinse!

**i** In case of use in combination with a manicure/pedicure procedure involving the application of decorative coating, remove the product residues, degrease, and dry the nail plate.





# NAIL THERAPY SYSTEM

NAIL RECOVERING THERAPY  
FOR THIN, BRITTLE,  
AND DELAMINATED NAILS



## HOW TO USE?

Apply as a base coat under a color nail coating or as a self-sufficient main coating, on the prepared nail plate.

**For best results**, we recommend you to use it together with other products from our Nail Therapy System:

**1st layer:** Argan Power

**2nd layer:** Vitamin Complex

**3rd layer:** Keratin Serum



AVAILABLE IN SETS AND  
ALSO BY THE PIECE

## ARGAN POWER, 9 ml

### NOURISHING AND REINFORCING VITAMIN THERAPY FOR DRY AND FRAGILE NAILS

#### ACTIVE NATURAL INGREDIENTS:

- ✓ **Argan oil** promotes the nail plate strengthening.
- ✓ **Vitamin A and E** nourishes the nail plate, making it more flexible, and preventing delamination.
- ✓ **Vitamin B** boosts the nail plate growth thanks to a rich infusion of microelements.
- ✓ **Vitamin C** prevents the nail plate thinning and improves the absorption of vitamins A and E.

## VITAMIN COMPLEX, 9 ml

### SPECIAL FORMULA ENRICHED WITH VITAMINS TO NOURISH THE NAIL, IMPROVE ITS ELASTICITY, AND RECOVER THE NAIL STRUCTURE

#### ACTIVE NATURAL INGREDIENTS:

- ✓ **Vitamin A** nourishes the nail plate, making it more flexible, and preventing delamination.
- ✓ **Vitamin E** nourishes the nail plate, gives it shine, and stimulates its active growth.
- ✓ **Vitamin F** nourishes the nail plate and prevents delamination.

## KERATIN SERUM, 9 ml

### HAS BEEN ESPECIALLY DESIGNED FOR SOFT, THIN, AND BRITTLE NAILS THAT TEND TO BREAKING

#### ACTIVE NATURAL INGREDIENTS:

- ✓ **Keratin** deeply penetrates the nail plate, restoring the keratin layer and strengthening the nail structure; intensively moisturizes and restores the moisture balance in the nails.
- ✓ **Plant extracts** intensively hydrate and restore the moisture balance in the nails.





**emi**

YOUR MANICURE  
YOUR STYLE

IN THE LEADING BEAUTY  
SALONS IN YOUR CITY

discover more trends at  
[@emi.global](https://www.instagram.com/emi.global)

[emischool.com](https://emischool.com)

# emi

PRODUCT RANGE  
AND TUTORIAL







has always distinguished itself from other nail brands with its unique personality. EMI-manicure allows you to be different, experiment, and discover something new all the time. It gives you an excellent opportunity to share your vibe with people around you.

## OUR MISSION IS

to provide nail professionals with modern and proven manicure tools.  
To let them create a unique style for each of their clients.

- ☒ 33+ countries all over the world
- ☒ the best suppliers of raw materials from Europe, South Korea, and the USA
- ☒ product range 2010+



high-quality products



unique designs



complex business solutions  
for beauty studios

## OWN MANUFACTURE IN EUROPE

(Czech Republic, 1 800 m<sup>2</sup>)



# COOPERATION PROGRAMS



## BEAUTY SALON B2B

- Products created by professionals for professionals.
- A wide range of materials and accessories for nail service masters.
- Release of a new collection every season.



## PROFESSIONAL RETAIL

Retail experience:

- Eurokos, Lithuania
- Tradehouse, Estonia
- K-Citymarket, Finland



## ONLINE & OFFLINE TRAINING PROGRAMS




- Nail Academy with author's programs.
- Professional Manicure and Pedicure courses.
- Offline training.



## HOME USE

- Enjoy the salon effect at home with a comfortable and cozy atmosphere.

# CONTENT

	PREPARATION MATERIALS	5
	NAIL POLISH SYSTEM	6
	GEL POLISH SYSTEM (E.MILAC SYSTEM)	8
	GEL SYSTEM	16
	DECORATIONS	20
	TOOLS	26
	CARE AND TREATMENT	30

Nail Polish System

Gel Polish System

Gel System

## PREPARATION MATERIALS



### CLEANSING SPRAY

200 ml, 1000 ml

Apply before the procedure on the hands of the client and the master of the nail service.

DISINFECTANT



### EUROCLEANSER

200 ml, 1000 ml

Completely remove oil, wet, and dirt.

DEGREASER



### NAIL PREP AID

9 ml, 15 ml, 30 ml, 100 ml

Removes the water and natural oil excess.

Apply Nail Prep Aid on the nail plate.

DEHYDRATOR



### ULTRABOND

9 ml, 15 ml, 30 ml, 100 ml

„Double-sided tape“: sticks together a base coat and nail plate to prolong the last of a manicure.

Apply Ultrabond with a thin layer only on the free edge and around the cuticle.

PRIMER



### CUTICLE REMOVER

9 ml, 15 ml, 100 ml

Suitable for trimmed, combined, and hardware manicures.

- ✓ Quickly and gently softens the cuticle;
- ✓ Slows down the growth of the cuticle;
- ✓ Helps to give your nails a healthy, well-groomed look in seconds without damaging the nail bed.

Apply E.MiLac Cuticle Remover on cuticles. After 2-3 min, remove the rough skin using a nail stick.

CUTICLE SOFTENER



### GEL AND NAIL POLISH REMOVER

200 ml, 1000 ml

- ✓ Developed especially to remove E.MiLac.
- ✓ No harm to a nail; without filing the top coat.
- ✓ Has a pleasant smell!

REMOVER



## NAIL POLISH SYSTEM

**BASE COAT:** Apply the product and let it air dry for 1-2 min.



### ULTRA STRONG BASE COAT

9 ml

- ☑ For thin nail plate.
- ☑ Innovative Pro-UV technology provides a stable coating even in daylight.
- ☑ Strengthens and improves the nail's structure.
- ☑ Prevents cracks and makes a secure base under coat.



### NATURAL FORCE NAIL STRENGTHENER

9 ml

- ☑ For weak, damaged nails.
- ☑ The power of nature to strengthen and restore natural nails.
- ☑ Full recovery of damaged nails in 8 weeks.

**COLOR LAYER:** Apply the product and let it air dry for 5-7 min.



### ULTRA STONG NAIL POLISH GEL EFFECT

9 ml

Combines the best properties of nail polish and gel polish, and does not need soaking off or the use of a lamp.



Permanent manicure up to 10 days



Gel effect without lamp



Removed with Nail Polish Remover

**TOP COAT:** Apply the product and let it air dry for 3-5 min.



### ULTRA STRONG TOP COAT

9 ml

Glassy protective coat for natural nails. UV-polymer and photoinitiator interact with daylight. So the coat is stronger day after day.



### ULTRA STRONG MATT TOP COAT GEL EFFECT

9 ml

Soft touch effect.

Creates an efficient anti-chipping protective film that prevents color from fading away.

# ULTRA STRONG NAIL POLISH GEL EFFECT COLOR RANGE

BASIC COLLECTION														
001	002	004	005	006	010	011	014	015	016	017	019	020	021	
Snow White	Misty Pink	Cloud Dancer	Antique White	Macadamia	Toasted Almond	Maple Sugar	Wenge	Mahogany	Marsala	Rose Tan	Strawberry Cream	Morning Glory	Marshmallow	
023	024	025	026	027	028	029	030	031	032	035	037	038	039	
Fuchsia	Sweet Plum	Blackberry	Twilight	Burgundy Wine	Beaujolais	Imperial Red	Flawless Red	Barberry	Raspberry Red	Cardinal	Grenadine	Buttercup	Green Flash	
			CHARMING DATE					TOTAL GRAY						
041	045	050	051	052	054	055	056	061	062	064	065	066	067	
True Blue	Serenity	Little Black Dress	Bermuda	Lime	Papaya Punch	Exotic Pink	Oleander	Pale Jade	Oxford Blue	Neutral Gray	French Gray	Peach Puff	Pure Cashmere	
FASHION QUEEN											BLOOMING LIFE			
070	071	073	074	075	076	077	079	080	081	082	093	091	089	
Diamond Shine	Royal Blue	Enigma	Magnetism	Lipgloss	Flame Scarlet	Amaranth	Malachite	Ultramarine Green	Military	Dark Denim	Spring Greenery	Clouds	Cream White	
GRAND RESORT														
105	104	102	101	099	098	097	096	095	094	087	086	085		
Aloha	Caribbean	Dragon Fruit	Hibiscus	Strawberry Guava	Hot Girl	Coral Sunset	Red Sand	Aqua Green	Seafoam	Sugar Coral	Barbie Style	Sweet Symphony		
STONE MARBLE					CELEBRITY					RED MANIFEST				
106	107	108	110	111	112	113	114	115	116	118	119	120	121	124
Coco Style	Leather Loafers	Top Secret	Sauvignon Blanc	Buffalo	Martini Olive	London Morning	Blue Blazer	Harbor Mist	Nude Chic	Ferri Red	Moulin Rouge	Pretty woman	Love Story	Manhattan Night
BOHO CHIC					AROUND THE WORLD									
125	126	127	128	129	130	139	140	141	142	143	144			
Black Wood	Boho Chic	Morocco	Turmeric	Desert Heart	Pocahontas	Casablanca	Athens	Macau	Geneva	Rome	Virginia			
JUICY NEON					CLOSER TO NATURE									
153	154	155	156	157	158	145	146	147	148	149	150	151	152	
Sour Bite	Summer Glasses	Dizzy Vibe	Pretty Sweaty	Morning Cartoon	Laser Show	Evening Sand	Ripe Coralian	Dusty Lilac	Macadamia	Dragonfly	Light Drizzle	Salvia	Cotton	

# GEL POLISH SYSTEM (E.MILAC SYSTEM)

<b>1<sup>ST</sup> PHASE ADHESION</b>	This step helps the gel bind with your natural nail. This will ensure that your gel polish manicure last as long as possible.	<ul style="list-style-type: none"> <li>• Base Gel</li> <li>• Base Gel HEMA FREE</li> <li>• Hard Base Gel HEMA FREE</li> <li>• Ace Base Gels</li> <li>• Fiber Base Gels</li> </ul>
<b>2<sup>ND</sup> PHASE MODELING</b>	Now it's time to correct the shape of the nails. This means <b>alignment</b> and/or <b>strengthening</b> . Extension (lengthening) is also possible in the gel polish system, but only by 2 mm.	<ul style="list-style-type: none"> <li>• Sculpt Medium Gel</li> <li>• Sculpt Maxi Gel</li> <li>• Camouflage Base Gels</li> <li>• Crispy Base Gels</li> <li>• Hard Base Gel</li> <li>• Twinny Gels</li> </ul>
<b>S</b> STRENGTHENING	<b>M</b> MODELING / ALIGNMENT	<b>L</b> LENGTHENING / EXTENSION
<b>3<sup>RD</sup> PHASE PROTECTION</b>	Apply the top gel to prevent chips and scratches, prolong the great look of the manicure, and make it last longer. Choose a top gel to give the nails a special effect — from noble matte to ultra shine or with the flakes.	<ul style="list-style-type: none"> <li>• Top Gel</li> <li>• Ultra Shine Top Gel</li> <li>• Velvet Top Gel</li> <li>• Top Gel Tackless</li> <li>• Dramatic Top Gel</li> <li>• Silver Drop Top Gel</li> <li>• Slider Top Gel</li> </ul>

## THE RECOMMENDED METHOD TO WORK WITH THE GEL POLISH SYSTEM

Order:	preparation stage		1st: adhesion	2nd: modeling	color		3rd: protect	
Cure:	20 sec on air		60 s	120 s	120 s	120 s	180-240 s	
	Nail Prep	Ultrabond	Base Gel	Hard Base Gel	E.MiLac Color 1. layer	E.MiLac Color 2. layer	Top Gel	
			Base Gel HEMA FREE	Sculpt-Medium Base Gel			Ultra Shine Top Gel	
			Hard Base Gel HEMA FREE	Sculpt-Maxi Base Gel			Velvet Top Gel	
				Camouflage Base Gels				
				Crispy Base Gels			Top Gel Tackless	
				Twinny Gels				
			Fiber Base Gels					Silver Drop Top Gel
			Ace Base Gels					

PREPARATION

1<sup>ST</sup> PHASE  
**ADHESION**

2<sup>ND</sup> PHASE  
**MODELING**

COLOR

3<sup>RD</sup> PHASE  
**PROTECTION**

### BASE GEL

9 ml, 15 ml, 30 ml, 100 ml

Universal: for all nail types.  
Self-levelling.

High adhesion.

Low viscosity.

Soak-off.



S M



### BASE GEL HEMA FREE

9 ml

A rubber base coat with no HEMA,  
with vitamins and proteins.

Self-levelling.

High adhesion.

High viscosity.

Does not burn in a lamp.

Soak-off.

S M



### HARD BASE GEL HEMA FREE

9 ml

A rubber base coat with no HEMA,  
with keratin.

Self-levelling.

High adhesion.

Higher viscosity than E.MiLac  
Base Gel HEMA FREE.

Does not burn in a lamp.

Soak-off.

S M



PREPARATION

1<sup>ST</sup> PHASE  
**ADHESION**

2<sup>ND</sup> PHASE  
**MODELING**

COLOR

3<sup>RD</sup> PHASE  
**PROTECTION**

### SCULPT-MEDIUM BASE GEL

9 ml, 15 ml, 30 ml, 100 ml

For normal nails.

Medium viscosity.

Soak off.



S M



### SCULPT-MAXI BASE GEL

9 ml, 15 ml, 30 ml, 100 ml

For problem, flat, caved-in  
nails.

High viscosity.

Soak off.



S M



### HARD BASE GEL

9 ml, 15 ml, 30 ml

Rigid.

For weak, soft, easily bent nails.

It is necessary to apply the  
E.MiLac Base Gel before.

Does not soak off.

S M L







2 in 1  
combines  
modeling and  
color stages



Preserve the  
coating up to  
4 weeks



Greatly reduce  
the time of  
manicure service



Barely noticeable  
translucent border  
during nail growth.



S M

## CAMOUFLAGE BASE GELS

9 ml, 15 ml

2 in 1: modeling + nude shade.

For French and nude-style manicures.

Medium viscosity.

Soak off.

1. Prepare the nail plate. Degrease with Eurocleanser. Apply Ultrabond on the nail end.
2. Apply a thin layer of E.MiLac Base Gel Cure 1 min in a LED/CCFL lamp.
3. Apply an E.MiLac Camouflage Base Gel. Cure in any lamp for 2 minutes. Repeat this step if needed.
4. Draw a French smile using E.MiLac Gel Polish "White Lotus" #001-01. Cover with the top gel of your choice. Cure for 2 minutes.

Remover with a special liquid Gel and Nail Polish Remover.



M

## TWINNY GELS

9 ml, SET 6 pcs \* 9 ml

Medium viscosity, high adhesion.

Combines the nail modeling and the color coating stages.

**Fine shimmer and large-figured glitter**  
as a design elements.

Soak off.

1. Prepare the nail plate. Degrease with Eurocleanser. Apply Ultrabond on the nail end.
2. Apply a thin layer of E.MiLac Base Gel Cure 1 min in a LED/CCFL lamp.
3. Apply a first thin layer of E.MiLac Twinny. Cure in any lamp for 2 minutes. Apply a second sculpting layer, turn and center. Make sure the layer thickness on the lateral sides and nail end is at least 0.5 mm. Cure 2 min in a lamp.
4. Apply E.MiLac Ultra Shine Top Gel. Cure for 2 min.

Remover with a special liquid Gel and Nail Polish Remover.



M

## CRISPY BASE GELS

9 ml

Base Gel with sparkling dutch metal.

Medium viscosity.

Does not spread, self-leveling.

Does not stick out.

Does not need filing.

Soak off.

1. Prepare the nail plate. Degrease with Eurocleanser. Apply Ultrabond on the nail end.
2. Apply the E.MiLac Crispy Base Gel. Cure in any lamp for 2 minutes. Repeat this step if needed.
3. Apply E.MiLac Ultra Shine Top Gel. Cure for 2 min.

Remover with a special liquid Gel and Nail Polish Remover.



PREPARATION

1<sup>ST</sup> PHASE  
**ADHESION**

2<sup>ND</sup> PHASE  
**MODELING**

COLOR

3<sup>RD</sup> PHASE  
**PROTECTION**



Formulated with high adhesion to ensure an incredible durability



Strong nails even with a lesser thickness of coating



Superfast manicure



## ACE BASE GELS

9 ml

Superfast manicure — helps you save time.  
Strong nails even with a lesser thickness of the coating.  
Formulated with high adhesion to ensure incredible durability.  
Dense color coating in soft classic shades.  
Soak off.



S M

1. Prepare the nail plate. Degrease with Euro-cleanser. Apply Ultrabond on the nail end.
2. Apply a thin layer of E.MiLac Ace Base Gel. Cure in any lamp for 2 minutes. Repeat this step if needed.
3. Apply E.MiLac Ultra Shine Top Gel. Cure for 2 minutes.

Remover with a special liquid Gel and Nail Polish Remover.



Contains reinforcing synthetic fibers



Vitamin E and Calcium



Preserve the coating up to 4 weeks



Save up to 30 minutes



## FIBER BASE GELS

15 ml, 100 ml

Thick, medium viscosity.  
Have a dispersion layer.  
High adhesion.  
Soak off.



S M

1. Prepare the nail plate. Degrease with Euro-cleanser. Apply Ultrabond on the nail end.
2. Apply a thin layer of E.MiLac Fiber Base Gel. Then we put a drop and model the architecture. Cure in any lamp for 2 minutes.
3. Apply E.MiLac Ultra Shine Top Gel. Cure for 2 minutes.

Remover with a special liquid Gel and Nail Polish Remover.

Min. viscosity



Max.  
viscosity

Base Gel	Camouflage Base Gels	Sculpt-Medium Base Gel	Twinny Gels	Sculpt-Maxi Base Gel	Hard Base Gel
	Ace Base Gels	Fiber Base Gels			
	Base Gel HEMA FREE	Hard Base Gel HEMA FREE			



# E.MiLAC GEL POLISH

9 ml, 15 ml

E.MiLac is the ideal product for creating stylish decorative nail coatings.



Long-lasting manicure up to 4 weeks!



Self-leveling during application.



Intense color even in 1 layer.



Ideal for one-color coating and designs.



## BASIC COLLECTION

001-01 15 ml	001 15 ml	002	003	005	007	008	009	010	012	013	015	016	017
White Lotus	White Lotus	French Style	Pink Cream	Sunny Day	Nature of Flame	Luxurious Red	Flamenco Dancer	Coral	Genuine Lady	Cappuccino	Nutmeg	Smokey Eyes	Americano
018	019	020	021	024	025	026	027	028	029	030	031	033	034
Winter Cherry	Berry Cocktail	Gothic Pink	Pink Neon	Blueberry Yogurt	Lilac Peony	Grape Fresh	Purple Glow	Twilight	Cobernet Bordeaux	Black Gloss	Sky of Stars	Indigo	Turquoise

## SHADES OF ELEGANCE

038	039	040	041	042	043	044
Camellia Flower	Vanilla Sky	Tender Powder	English Silk	Vintage Mood	Pale Rose	Bridal Bouquet

## NEON

048	049	050	051	052	053	054
Bubble Gum	Adrenalin	Energy Club	Laser Lemon	Green Absinthe	Blue Curacao	Euphoria

## PARK AVENUE

055	057	058	059
Pink Sands	Aquamarine	Green Apple	Canotier

## COZY EVENING

062	063	065	066	068
Amber Honey	Creme Brulee	Dusty Cedar	Milk Cacao	Sharkskin

## DOLCE VITA

071	072	073	074	075
Merlot	Imperial Red	Raspberry	Flawless Red	Cardinal

## ROYAL TONE

077	078	079	080
Marsala	Dark Wine	Crushed Violets	Wild Grape

## SPORT CHIC

083	084	085	086	087	088
Open Air	Fitness Green	Ice Lemon	Coralline	Streetstyle	Vogue

## TROPICAL GARDEN

089	092	093	094
Capri	Passion Flower	Shocking Pink	Coral Quartz

## CITY WOMAN

095	096	097	098	099	100
Beige de Neige	Nude Look	Romantic Pink	Provence Blossom	Morning Sky	Mint Frappe

## SEASON OF CONTRAST

101	102	103	104	106
Magic Wood	Navy Blue	Ultramarine	Renaissance	Winter Safari

## SHIMMER DREAMS

112	113	117
Shiny Smile	Blush Zone	Amethyst

TOTAL GRAY										SEASON OF CONTRAST				
107	121	122	123	124	125	126	127	129		157	158	162	164	166
Nude Style	Evening Shadow	Pale Jade	Oxford Blue	Moon Mist	Neutral Gray	French Gray	Peach Puff	Savage		Golden Diva	Diamond Shine	Magnetism	Flame Scarlet	Bitter Chocolate
BLOOMING LIFE					GRAND RESORT		PASTEL RINGS!			STONE MARBLE				
172	173	181	182	183	188	189	195	196	197	202	203	207	208	
Parfait	Sweet Symphony	Spring Greenery	Seafoam	Aqua Green	Berry Punch	Hibiscus	Orchid	Sweet Lavender	Forget-me-not	Cotton Candy	Jelly Bean	Royal Ascot	Sauvignon Blanc	
CELEBRITY					HYPE					LA MUSE				
210	211	212	213	214	215	217	218	219	220	221	231	233	234	
Martini Olive	London Morning	Blue Blazer	Harbor Mist	Nude Chic	Paris Weekend	Plan B	Long Island	Wall Street	Miss Bordo	Black Jack	Olive Sun	Linen Waistcoat	Serein Luxur	
RED MANIFEST								BOHO CHIC			TOXIC			
222	223	224	225	226	227	228	230	239	240	242	245	246	247	
Ferrari Red	Moulin Rouge	Pretty Woman	Love Story	Chicago Spirit	Borgia	Passion Cherry	Perfect Red	Morocco	Turmeric	Pocahontas	Malibu	Vegas	Miami	
MILKY				STAINED GLASS			BORN TO SHINE					HARMONY		
249	250	251	252	253	254	256	259	260	262	263	264	268	270	
Milk Style	Tender Style	Pink Style	Beige Style	Princess Blue	Deep Lake	Pink Peacock	Gray Iceberg	Kompromat	Aurora	Just Affair	Friend Zone	Wild Plum	Lights of Galaxy	
COVER GIRL		MOMENTS						GIVE ME MORE						
272	276	277	278	279	280	281	282	283	284	285	286	287	288	
Chocolate Box	Green Tweed	Neo Mint	Niagara	Ice Drop	Blue Blood	Verona	Blanc de Blancs	Any Whim	Acid Lipstick	Banana Shake	Cuban Sand	Blueberry Smoothie	Hotel California	
B-URBAN						JAZZ AGE								
290	291	292	293	294	296	297	298	299	300	301	302	325	326	
Unknown	Stone Jungle	Roof Garden	Underground	Metropolis	Capital	Sparklers	Tango Taste	Rendez-Vous	Solo	Blackout	Happy Dress	Lively Green	Green Glow	
NEW GENERATION								NUDE						
303	304	305	306	307	308	309	310	311	312	313	314	315	316	
Honest	Delicious	5th Element	Techno	Neuro	Next	Vision	Shape Up	Pure Desire	Closeness	Hidden Feeling	Slow Inhale	Body Language	Affection	



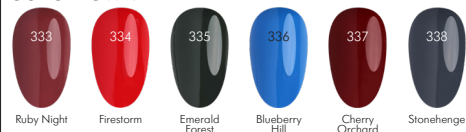
# WEDDING COLLECTION



# RICHES



# OUT OF TOWN



# EGOISM



# CASINO



# ANGELS



# CLOSER TO NATURE



# MY IMPULSE



# PLATONIC LOVE



# VIVA LA DIVA



# REFLEXIVE GALAXY

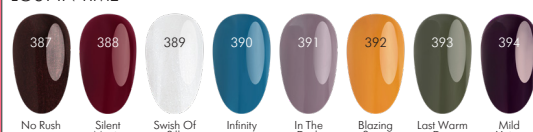


# E.MILAC ONE STEP FOR PEDICURE

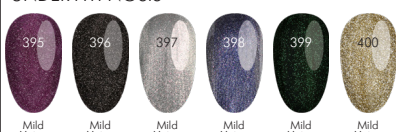
Single-phase gel polishes that do not need the use of a base and top coat. Perfectly suitable for a pedicure, reducing the time of the pedicure.



# LOST IN TIME



# UNDER HYPNOSIS



PREPARATION

1<sup>ST</sup> PHASE  
ADHESION

2<sup>ND</sup> PHASE  
MODELING

COLOR

3<sup>RD</sup> PHASE  
PROTECTION


### TOP GEL

9 ml, 15 ml, 30 ml, 100 ml

Universal.  
Fast self-leveling.  
Glossy brilliance.  
With a sticky layer.  
Soak off.



### TOP GEL TACKLESS

9 ml, 15 ml, 30 ml, 100 ml

For usage with Princot, Textone, Glossemi, and pigments.  
Has crystal brilliancy.  
Without a sticky layer.  
Soak off, needs a primary filling.



### ULTRA SHINE TOP GEL

9 ml, 15 ml, 100 ml

Extra strong, glass effect.  
Does not suitable for soft weak nails.  
Without a sticky layer.  
Not soak off.



### VELVET TOP GEL

9 ml, 15 ml

Noble matte effect.  
Perfect for any shades: dark and light.  
Without a sticky layer.  
Soak off.



### DRAMATIC TOP GEL

9 ml

Dizzying disco ball effect.  
Particles of gold leaf shimmer in different colors under different lighting angles.  
Without a sticky layer.  
Not soak off.



### SILVER DROP TOP GEL

9 ml

A glossy top coat with medium-sized matt silver flakes.  
Without a sticky layer.  
Not soak off.



Min. shine	► ► ► ► ► ► ► ►	Max. shine
Velvet Top Gel	Top Gel	Ultra Shine Top Gel
	Top Gel Tackless	
	Dramatic Top Gel	
	Silver Drop Top Gel	

### SLIDER TOP GEL

9 ml, 15 ml, 30 ml, 100 ml

Special Top gel for the designs with sliders (Naildress, Nailcrust, Nailcrust 5D)

Application only in a thin layer.

**Requires any E.Milac protective topcoat applied above.**

With a sticky layer.

Soak off.



## GEL SYSTEM

<b>1<sup>ST</sup> PHASE ADHESION</b>	This step helps the gel bind with your natural nail. This will ensure that your gel polish manicure last as long as possible.	<ul style="list-style-type: none"><li>• Base gel</li><li>• Super Bond Gel</li><li>• Easy One Gel</li></ul>			
<b>2<sup>ND</sup> PHASE MODELING</b>	Now it's time to correct the shape of the nails. This means <b>sculpting</b> and/or <b>extension</b> .	<ul style="list-style-type: none"><li>• Easy One Gel</li><li>• Monophase LED Gel</li><li>• Natural Composite Gel</li><li>• Soft Gels</li><li>• (Natural ) Form Gel Clear</li><li>• Acrygel</li></ul>			
<b>S</b>	STRENGTHENING	<b>M</b>	MODELING / ALIGNMENT	<b>L</b>	LENGTHENING / EXTENSION
<b>3<sup>RD</sup> PHASE PROTECTION</b>	Apply the top gel to prevent chips and scratches, prolong the great look of the manicure, and make it last longer. Choose a top gel to give the nails a special effect — from noble matte to ultra shine or with the flakes.	<ul style="list-style-type: none"><li>• Easy One Gel</li><li>• All top gels from Gel Polish System</li></ul>			

### THE RECOMMENDED METHOD TO WORK WITH THE GEL SYSTEM

Order:	preparation stage		1st: adhesion	2nd: modeling	color		3rd: protect
Cure:	2 min on air		60 s	120 s	120 s	120 s	180-240 s
	Nail Prep	Ultradond	Base Gel	Monophase LED Gel	E.MiLac Color 1. layer	E.MiLac Color 2. layer	All Top Gels from Gel Polish system
			Super Bond Gel	Natural Composite Gel			
				Soft Gels			
				Form Gel Clear/ Natural			
				Acrygels			
			Easy One Gel		E.MiLac Color 1. layer	E.MiLac Color 2. layer	Easy One Gel
			Twinny Hard Gel (120 s * 2 layers)				

PREPARATION

1<sup>st</sup> PHASE  
ADHESION

2<sup>nd</sup> PHASE  
MODELING

COLOR

3<sup>rd</sup> PHASE  
PROTECTION

**SUPER BOND GEL** M L

9 ml

Base coat for Gel System.  
Recommended for weakened and thin nails.  
High adhesion.  
Low dispersion.  
LED/CCFL lamp: 30 sec, UV lamp: 1 min.


**EASY ONE GEL** S

5 g, 15 g, 50 g, 100 ml (doypack)

3 in 1 (base, modeling, protection).

**The most flexible gel, so:**

- Not for modeling, not for an extension
- For soft nails.

Color: transparent.

Cure in 2 min in any lamp.

PREPARATION

1<sup>st</sup> PHASE  
ADHESION

2<sup>nd</sup> PHASE  
MODELING

COLOR

3<sup>rd</sup> PHASE  
PROTECTION

**ACRYGELS**

S M L



The best qualities from both gel and acrylic



Suitable for weak and damaged nails



For easier work with brush use Cleansing Spray



5g, 30g

GLASS

5g, 30g

MILK

5g, 15g, 30g

COVER

5g, 30g

CARAMEL

5g, 30g

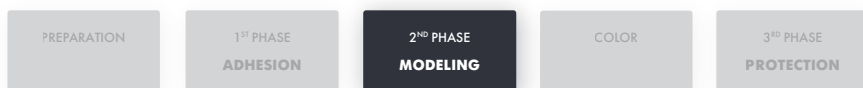
DUSTY ROSE


**ACRYGEL WHITE**

5 g, 15 g, 50 g

1. Prepare the nail plate and degrease it. Apply Nail Prep Aid and after that apply Ultrabond.
2. Apply the base gel Super Bond Gel (or E.MiLac Base Gel), and cure in a lamp.
3. Take the required amount of Acrygel using a nail stick. Apply it onto the nail plate. Apply it onto the nail plate.
4. Use a moistened brush to spread Acrygel over the nail surface, shaping it into a desirable form. First, press and then spread the product in a thin layer near the nail cuticles and nail walls. Then spread it over the entire nail plate with stretching movements. Cure for 2 minutes in any lamp.
5. Attention!!! Do not apply too much pressure. Instead, you should stretch the product over the nail plate using a brush. Applying too much pressure might cause the brush leaves traces afterward.
6. Use the Nail File White 100/180 for artificial nails. Use the Soft File 100/180. Cleanse the surface with Eurocleanser.
7. Apply a decorative coating. Apply E.MiLac Top Gel Tackless or Brilliant Finish Gel. Cure or 2 minutes in any lamp.





## EASY ONE GEL

5 g, 15 g, 50 g, 100 ml

3 phases in 1.

For soft nails.

Color:

transparent.

S



## NATURAL COMPOSITE GEL

5 g, 15 g, 50 g

High viscosity.

Suitable for sealing & repairing.

In a thin layer suitable for extending the free edge on forms.

Color: natural beige.

S



## MONOPHASE LED GEL

5 g, 15 g, 50 g, 9 ml, 15 ml,

30 ml, 100 ml

High self-modeling ability.

For all types of nails.

Color: transparent, gloss.

M L



## FORM GEL CLEAR

5 g, 15 g, 50 g

The best for modeling on forms.

Suitable for pinching and extreme shapes modeling.

Not suitable for modeling over the natural nail, only the free edge.

Color: transparent.

L



## SOFT PINK JELLY GEL

5 g, 15 g, 50 g

For sculpted French manicure.

Not suitable for nail length correction.

Suitable for repairing.

Color: tender pink.

S M



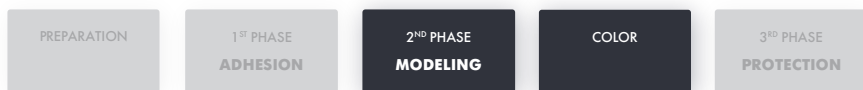
## SOFT GELS

For all types of nails.

Viscosity below average.

Tender shades.

S M



## TWINNY HARD GEL

15 g

2 in 1: combines modeling and color stages.

Significantly reduce the time of manicure service.

Viscosity below the medium.

Needs the E.MiLac Base Gel as an adhesive layer.

S M



1. Prepare the nail plate, polish and file it. Degrease with Eurocleanser. Apply a thin layer of Nail Prep Aid and Ultrabond, air dry.
2. Apply a thin layer of E.MiLac Base Gel. Cure in a lamp for 1 min.
3. Apply Twinny Hard Gel, starting close to the nail cuticles. Perform the nail modeling, turn over and center. Cure in the lamp for 2 min. Apply the second layer of Twinny Hard Gel and also cure in the lamp for 2 min.
4. Apply any E.MiLac top coat and cure in the lamp for 2 min.

PREPARATION

1<sup>ST</sup> PHASE  
ADHESION

2<sup>ND</sup> PHASE  
MODELING

COLOR

3<sup>RD</sup> PHASE  
PROTECTION

## E.MiLAC GEL POLISH

9 ml, 15 ml

E.MiLac is the ideal product for creating stylish decorative nail coatings.

- Cure in a lamp for 2 min.
- With a sticky layer.
- 400+ shades in the palette.



## GEL PAINTS

5 ml (jar)

IS USED WITH GEL SYSTEM ONLY!

With a sticky layer.



1. Prepare the nail plate, polish and file it. Degrease with Eurocleanser. Apply a thin layer of Nail Prep Aid and Ultrabond, air dry.
2. Apply Gel or Acrygel, and cure for 2 min in any lamp.
3. Apply the gel paint. Let to cure for 2 min in any lamp. Thanks to excellent consistency, 1 layer is pretty enough.
4. Cover with Brilliant Finish Gel. Cure for 2 min in any lamp.

### CLASSIC



Black Tulip



Alpine Snow



Sunny Buttercup



White Classic



Red Poppy



Royal Purple



Imperial Red



Forest Raspberry



Ripe Cherry



Christmas Red



Tropicana



Crazy Jungle



Reflex Blue



Star Style



Flex



After Party

### NEON

### CONFETTI

### SEASONAL

### MAGIC SPELLS

### PEARL



Electric Sunset



Violet Rays



Verdure



Flame



Ferula



Flagrate



Engorgio



Geminio



Dissendium



Diffindo



White Pearl



Blue Blues



Walnut



Maya Gold



Night Violet

### HYPE

### SET HOLLYWOOD 6 pcs x 5 ml

### SET GIVE ME MORE 6 pcs x 2 ml



Friday Set



Plan B



Long Island



Wall Street



Miss Bordo



Black Jack



Audrey



Marilyn



Rita



Ingrid



Judy



Elizabeth



Any Whim



Acid Lipstick



Banana Shake



Cuban Sand



Blueberry Smoothie



Hotel California

Most flexible	► ► ► ► ► ► ► ►	Hard
Easy One	Monophase	Form Gel Clear
	Soft Gels	Form Gel Natural
	Twinny Hard	Natural Composite Gel
		Acrygels

## DECORATIONS

- Effects
- Stickers
- Volume
- Dusty & Trifle





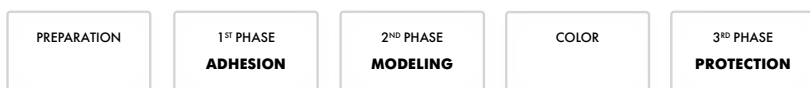
CHROME EFFECT

**TEXTONE**

9 ml (15 ml), set 2 pcs \* 9 ml

- Suitable for covering.
- More liquid than E.MiLac.
- It can be air dried as well as by hairdryer.

1. Prepare the nail plate according to the chosen system. Apply base coat.
2. Apply E.MiLac Top Gel Tackless and cure for 2 minutes in any lamp. In case of nail polish system skip this step.
3. Apply the Textone. Air dry (7 min) / dry by hairdryer (1-2 min) or cure in the lamp (30 sec).
4. Cover with E.MiLac Top Gel Tackless and cure for 2 minutes in any lamp. In case of nail polish system cover with E.MiLac Top Coat.

ELEGANT LINES OR  
GEOMETRIC DESIGNS**SPIDER GEL**

black &amp; white, jar 5 ml

- Elastic, easy to stretch out.
- It stretches out into a thin, elegant line; it does not tear.
- Thanks to the sticky layer it immediately sticks to the nail plate.
- Easy to create geometric designs.
- With sticky layer.

1. Prepare the nail plate, apply a base coat, cure it in any lamp for 2 minutes. Apply a colour layer. Cure for 2 minutes.
2. Apply E.MiLac Top Gel and cure for 30 sec. **Remove a sticky layer.**
3. Make a design by the Spider Gel. Cure for 2 minutes in any lamp. No need to re-apply the top coat.

**Create any shade by mixing white Spider Gel with Pigments!**



# STICKERS

Nail Polish System

Gel Polish System

Gel System

PREPARATION

1<sup>ST</sup> PHASE  
**ADHESION**

2<sup>ND</sup> PHASE  
**MODELING**

COLOR

3<sup>RD</sup> PHASE  
**PROTECTION**



## CHARMICON SILICONE STICKERS

- Elastic, easy to stretch out.
- Alluring and elegant, daring and bold, subtle and sophisticated – stylish prints for your fashion looks.
- Easy to use.



1



Apply a Base Coat.

2



Cover with a colour.

3



Stick the Charmicon.

4



Apply a Top Coat.



## NAILDRESS SLIDER DESIGN

- Saves a nail master's time and optimizes her work.
- Sophisticated EMI-manicure in a few minutes!
- Variety of shapes and prints.



1



Apply a Base Coat.

2



Cover with a colour.

3



Cut, wet, remove from the base, glue. Apply the Ultrabond.

4



Apply a Top Coat.



## NAILCRUST PATTERN SLIDERS

- Allow for the most sophisticated and complicated convex bas-reliefs.
- Real help for a nail master. Ready-to-use patterns for drawn designs.
- Wide range offers infinite possibilities for creativity.



1



Apply a Base Coat.

2



Cover with a colour.

3



Cut, wet, remove from the base, glue. Apply the Ultrabond.

4



Apply a Top Coat.

Nail Polish System

Gel Polish System

Gel System

# STICKERS

PREPARATION

1<sup>ST</sup> PHASE  
**ADHESION**

2<sup>ND</sup> PHASE  
**MODELING**

COLOR

3<sup>RD</sup> PHASE  
**PROTECTION**

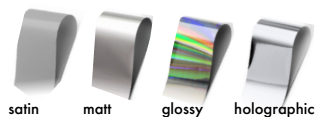


## DECOUPAGE STICKERS 3D

- Ready-to-work stickers (there is no need to cut)
- An optimal sticker size makes it convenient to place on the nail plates of various length (even on the shortest nails)
- Sticker flexibility guarantees an ideal match to the nail plate.

1. Prepare the nail plate. Apply a Base Coat, cure it.
2. Cover with a colour, cure. **Remove a sticky layer.**
3. Place a sticker on the nail.
4. Cover with E.MiLac SLIDER TOP GEL. Cure for 2 min in any lamp.
5. Cover with E.MiLac TOP GEL TACKLESS. Cure for 2 min in any lamp.

## FOIL



1. Prepare the nail plate. Apply a Base Coat, cure it.
2. Cover with a colour, cure. **DO NOT remove a sticky layer.**
3. Print foil on the sticky layer.
4. Cover with E.MiLac TOP GEL TACKLESS. Cure for 2 min in any lamp.

## SLIDER TOP GEL

9 ml, 15 ml, 30 ml

Special Top gel for the designs with sliders (Naildress, Nailcrust, Nailcrust 5D)

Application only in a thin layer.

**Requires any E.MiLac protective topcoat applied above.**



With sticky layer.  
Soak off.



# VOLUME

Nail Polish System

Gel Polish System

Gel System

PREPARATION

1<sup>ST</sup> PHASE  
**ADHESION**

2<sup>ND</sup> PHASE  
**MODELING**

COLOR

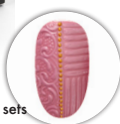
3<sup>RD</sup> PHASE  
**PROTECTION**



## EMPASTA

tube 5 ml, jars 2 and 5 ml, sets

- Used to draw thin lines.
- Without sticky layer.



## GEMTY GEL

jars 2 and 5 ml, sets

- Can be used solely to imitate precious stones or with Charmicon, Naildress, specially developed for Gemty Gel.
- Without sticky layer.



## PLASTICINE

white, jar 2 ml

- Can be mixed with pigments.
- Recommend to overlap with the top coat for nail polish.
- Need: a brush KZM-2 & Remover or Eurocleanser.



## GEL LIQUID STONES

jar 5 ml

- For imitation precious stones.
- Can be mixed with EMPASTA (2/3 + 1/3 of Gel Liquid Stones).
- Can be mixed also with Pigments and Gel Paints.
- With sticky layer.



## VELVET SAND

- Effect of soft and perforation cover.
- The set contains: brush for delicate sand remove, a special sticker for sand covering, a plastic container for sand keeping.



1. Prepare the nail plate. Apply a Base Coat, cure it.
2. Cover with a colour, cure.
3. Cover with a Top Coat, cure.
4. Decor with a decorative product. Cure the layer for 2 minutes in any lamp.  
**DO NOT cover with a Top Coat again.**

**Min. volume**



**Max. volume**

Empasta

Plasticine

Gemty Gel

Gel Liquid Stone

## DUSTY &amp; TRIFLE

## PREPARATION

1<sup>ST</sup> PHASE  
ADHESION2<sup>ND</sup> PHASE  
MODELING

## COLOR

3<sup>RD</sup> PHASE  
PROTECTION

## DUST

Can be mixed with each other.

1. Prepare the nail plate. Apply a Base Coat, cure it.
2. Cover with a colour, cure.
3. Cover with E.MiLac Slider Top Gel, cure for 2 min.
4. Rub the dust in.
5. Cover with E.MiLac Slider Top Gel, cure for 2 min.
6. Apply a protective layer. Cure for 2 min.



## PIGMENTS

Can be mixed with each other.

1. Prepare the nail plate. Apply a Base Coat, cure it.
2. Cover with a colour, cure.
3. Cover with E.MiLac Top Gel Tackless, cure for 2 min.
4. Rub the pigment with a brush in.
5. Cover with E.MiLac Top Gel Tackless, cure for 2 min.



## LIQUID MICA

Can be mixed with each other.

1. Prepare the nail plate. Apply a Base Coat, cure it.
2. Cover with a colour, cure.
3. Rub the mica with a brush in.
4. Cover with E.MiLac Top Gel Tackless, cure for 2 min.

METALLIZED  
STICKER TAPE

1. Prepare the nail plate. Apply a Base Coat, cure it.
2. Cover with a colour, cure.
3. Apply a decorative element.
4. Cover with E.MiLac Top Gel Tackless, cure for 2 min.



## CONFETTI

1. Prepare the nail plate. Apply a Base Coat, cure it.
2. Cover with a colour, cure.
3. Cover with E.MiLac Slider Top Gel. **DO NOT cure!**
4. Apply a decorative element.
5. Cover with E.MiLac Top Gel Tackless, cure for 2 min.



## RHINESTONES

## NAIL STUD

1. Prepare the nail plate. Apply a Base Coat, cure it.
2. Cover with a colour, cure.
3. Apply a Top Coat, cure it.
4. Apply a small drop of E.MiLac BASE Gel and put on drops Rhinestones/Nail stud. Cure for 2 min
5. Cover with E.MiLac Top Gel Tackless, cure for 2 min.



# TOOLS

- Nail Polish System
- Gel Polish System
- Gel System

- Nail Files
- Rotary files
- Brushes

## NAIL FILES

### ARTIFICIAL NAILS









### ARTIFICIAL & NATURAL NAILS









### NATURAL NAILS



# ROTARY FILES

						
	Corn-shaped Ceramic Rotary File, 6 mm	Corn-shaped Carbide Rotary File, 6 mm	Frustum-shaped Carbide Rotary File, 5.7 mm	Frustum-shaped Diamond Coated Rotary File, 4 mm	Drop-shaped diamond coated rotary file, 2.7 mm	Flame-shaped Diamond Coated Rotary File, 1.8 mm / 2.2 mm
abrasiveness	Fine	Medium	Medium	Medium	Medium/Fine	Fine
cover removing	gel polish (not gell!)	gel polish, gel, acrylic	gel			
free edge cutting	✓	✓	✓			
nail walls processing				✓	✓	✓
pterygium cleansing				✓	✓	
cuticle raising				✓	✓	
cuticle cutting				✓		✓

						
	Needle cone-shaped diamond coated rotary file, 1.4 mm	Rounded cone-shaped diamond coated rotary file, 3 mm / 2.3 mm	Cone-shaped silicone rotary file, 6 mm	Safe Rotary File	Ball-Shaped Diamond Coated Rotary File, 3 mm	Ball-Shaped Diamond Coated Rotary File, 4 mm
abrasiveness	Medium	Medium	Coarse	no	Medium	Fine
nail walls processing		✓	✓	so, not for cleaning or cutting  suitable for delicate skin and diabetes		
pterygium cleansing		✓	✓			
cuticle raising						
cuticle cutting					✓	✓
cracks opening (pedicure)	✓					
cracks processing (pedicure)					✓	✓
corns cutting			✓		✓	✓

# BRUSHES



**KO-4 Oval #4**

- Underpainting.
- Gel modeling.
- Red wine color, Torey.



**KO-6 Oval #6**

- Underpainting.
- Gel modeling.
- Red wine color, Torey.



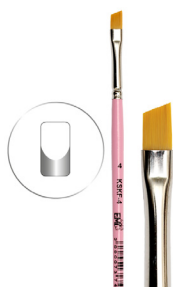
**KLE-4 Leaf #4**

- Decorative strokes.
- Gel sculpting.
- Golden color, Torey.



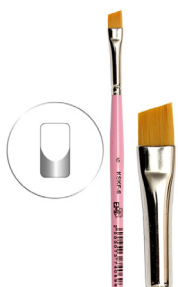
**KLE-6 Leaf #6**

- Decorative strokes.
- Gel sculpting.
- Golden color, Torey.



**KSKF-4 Beveled Square for French Manicure #4**

- French manicure and color tinting.
- Angle brush, golden color, Torey.



**KSKF-6 Beveled Square for French Manicure #6**

- French manicure and color tinting.
- Angle brush, golden color, Torey.



**KOB-4 Ombre #4**

- Ombre (gradient) technique.
- Flat brush with cut-out hair, Torey.



**KN Brush Needle**

- Fiberglass work, e.g. repairing natural or artificial nails.



**KL-5/0 Linear #5/0**

- Lines.
- Synthetic fiber, transparent base.



**KZL-5/0 Brush Linear #5/0**

- Lines.
- White synthetic fiber.
- Recommended for beginners.



**KM-3 Stroke #3**

- Underpainting.
- Red sable.



**KZM-0 Perfect Stroke #0**

- Underpainting.
- Dots.
- Wide strokes.

# BRUSHES

## ZHOSTOVO PAINTING:



## ONE STROKE PAINTING:

Flat wide brush, angle, red wine color, Torey.



## ACRYGEL:



### Brush & Spatula Tool

- Oval #6 from kolinsky sable hair.



KZL-5/0  
KZO-0/0  
KZM-0  
KSKF-6  
KO-6



KZO-0/0  
KZO-3/0  
KZO-1  
KZLE-1



KSKF-4  
KSKK-4  
KSKK-2

Set of brushes E.Mi  
Design technologies 2.0

Set of brushes for  
Zhostovo Painting

Set of brushes for  
One stroke painting

## CARE AND TREATMENT

- Nail regeneration
- Pedicure
- Nail cuticles care
- Care System
- SPA





# NAIL REGENERATION

## ARGAN POWER

9 ml

- Argan oil helps to strengthen the nail plate.
- Vitamin A and E nourish the nail plate and prevent delamination. Make the nail plate more flexible and shiny.
- Vitamin C prevents nail plate thinning and improves the effect of vitamins A and E.
- Vitamin B boosts nail plate growth thanks to a rich infusion of microelements.

VITAMIN THERAPY FOR DRY AND FRAGILE NAILS



## VITAMIN COMPLEX

9 ml

- Perfect vitamin therapy for thin and weakened nails after an artificial nail coat.
- Vitamins A, E, and F nourish the nail plate, make it more flexible and shine. The complex prevents delamination, stimulates the active growth of nail plates.

NAIL CARE COMPLEX FOR FRAGILE AND THIN NAILS



## KERATIN SERUM

9 ml

- Keratin Serum creates a protective layer. It strengthens the nail plate. While Keratin strengthens and moisturizes, the plant extracts nourish the nail plate.
- Keratin deeply penetrates the nail plate. It restores the keratin layer in the nail structure.
- Plant extracts intensively hydrate and restore the moisture balance in the nails.

PROTECTIVE SERUM FOR THIN AND BRITTLE NAILS



## AVAILABLE ALSO IN SET

### NAIL THERAPY SYSTEM

3 pcs \* 9 ml

For best results, we recommend you use them together:

1st layer: Argan Power

2nd layer: Vitamin Complex

3rd layer: Keratin Serum



## NAIL BOMB

9 ml

a jelly-conditioner for nails.

It quickly moisturizes and deeply nourishes the nail plate. It also protects against external factors and restores the nail plate.

- ✓ Aloe vera
- ✓ Camella extract
- ✓ Glycerin
- ✓ Shea butter extract
- ✓ D-Panthenol

### HOW TO USE:

- **As a mask:** we recommend applying the product to the nail plate and the skin around the nails. Let it soak in for 5-10 minutes. Rub in the remains with circular massage movements. Does not need rinsing.
- **As a part of a manicure procedure that includes the application of a decorative coating:** remove the residuals of the product, and degrease. Thoroughly dry the nail plate.



Recommended frequency of application: once a week.

## NAIL STRENGTHENER NATURAL FORCE

9 ml

- ✓ **PISTACIA RESIN OIL** promotes deep regeneration of the nail plate and gives it a natural shine.
- ✓ **A NATURAL PLASTICIZER** improves nail flexibility and forms a water-repellent film.
- ✓ **ROSE STEM CELLS** slow down the aging process.
- ✓ **A POWERFUL COMPLEX** with amino acids has an antioxidant effect. It moisturizes, nourishes, and increases nail thickness.

COMPLETE RECOVERY OF  
DAMAGED NAILS IN 2 MONTHS



### PREVENTION:

1. As a base coat for color.
2. As a self-coating: apply in 2 layers (does not need a top coat).

### THERAPY OF WEAKENED AND DAMAGED NAILS:

- 1-2 WEEK — cover the nails every day, layer by layer.
- 3-4 WEEK — we cover the nails every other day.
- 5-6 WEEK — cover the nails after 2 days.
- 7-8 WEEK — cover the nails after 3 days.

**At the end of each week, remove the coating with Nail Polish Remover.**

## PROTECT OIL

9 ml, 15 ml, 100 ml

- The antiseptic cuticle oil.
  - It prevents fungus growth.
  - 100% mildew proof.
- ✓ **TEA TREE OIL** has antifungal and antiseptic properties and may be an effective treatment for nail fungus.

ANTISEPTIC CUTICLE OIL

Apply a thin layer on the cuticle, and rub it with slight moves. Wait a minute, until the agent has dried.



## ANTIFUNGAL

9 ml

- ✓ **TOLNAFTATE** is effective in the prevention of fungal infections.
- ✓ **ETHYL ACETATE** promotes rapid absorption. It forms a protective film on the nail plate.
- ✓ **MINERAL COMPLEX:** Keratin, Calcium, Silicon, Provitamin B5 (panthenol), Vitamins C and E.

FUNGAL DISEASES PREVENTION  
AND CURING



BEFORE



AFTER



BEFORE



AFTER



- **FOR SMALL ONYCHOLYSIS:**  
drip the Antifungal into the subungual pockets twice a day until complete healing.

- **TO REPAIR WEAKENED, DAMAGED NAILS:**  
soak prepared nails, wait until dry, then it is possible to apply nail polish.

- **FOR ONYCHOREXIS:**  
drip in the morning and evening on the damaged part of the nail until complete recovery.

**! Treatment can be accelerated using Protect Oil.**

## AVAILABLE ALSO IN SET

### SET TREAT US

3 pcs \* 9 ml

#### Stronger together!

- E.MiLac Protect Oil
- Nail Strengthener Natural Force
- Antifungal



## NAIL POLYMER BOOSTER

9 ml

UV LAMP  
NEEDED

- It penetrates into the deep layers of the nail plate and helps to moisturize, nourish and thicken.
- It sews into the frame and reliably retains moisture, forming a protective film.
- Deep regeneration, growth, and strengthening of the nail plate.

### ✓ JOJOBA AND AVOCADO OILS

POLYMER FILLER FOR NAILS



1. Prepare the nail plate, polish and file it.
2. Apply a thin layer of Nail Polymer Booster.
3. Heat with a hair dryer/incandescent lamp to penetrate the product into the deep layers of the nail.
4. Wipe off excess with a dry cloth. Cure in a lamp for 2 min.
5. Remove sticky layer\*

\* You can use Nail Polymer Booster as an independent coating or cover it with nail/gel polish.

## INTENSE CARE MATTE EFFECT

9 ml

- A matte nail plate enhancer intended to promote strong and healthy growth.
- It provides protection to the nails and helps fight the problem of breaking off.

✓ **KERATIN** profoundly penetrates the nail plate. It restores the keratin layer in the nail structure.

✓ **BIOTIN** stimulates the natural formation of keratin in the nails.

✓ **CAFFEINE** improves the protective barrier functions of the nail plate.

✓ **VITAMINS B5 AND C** deeply moisturize, nourish, and protect the nail plate.



AN INVISIBLE STRONG "ARMOR SHIELD"



Apply a thin layer on the prepared nail plate as an independent coating or as a base coat twice a week.

## FOOT BATH GEL

300 ml

- Soft gel for soaking, cleansing and nourishing foot skin.
- Glycerin in the composition provides an anti-aging effect.
- AHA and D-Panthenol stimulate the renewal of the epidermis.

1. Apply the gel on moistened feet with massage movements.
2. Leave the gel on for 2-3 min to soak, then bathe your feet in warm water for 10 min.
3. Rinse the residues. Dry the skin.



## CRACK TREAT CREAM

300 ml

- Intensive regeneration. **Heals chapped skin and heels in 4 days.**
- A complex of active ingredients deeply nourishes and moisturizes damaged skin.
- With care for nature. The packaging is made from mono-material and is fully recyclable.

1. Apply cream to the problematic areas.
2. Gently massage for 1-2 minutes until the product has absorbed completely.



# PEDICURE

# PEDICURE

## UREA-BASED KERATOLYTIC

30 ml, 100 ml

### INDICATIONS:

- Dry skin
- Hyperkeratosis
- Cracks

### CONTRAINDICATIONS:

Wound surfaces, Individual intolerance, Children's age (up to 14 years).



CARBAMIDE 30-35%



## KERATOLYTIC — ROUGH SKIN SOFTENER

30 ml, 100 ml

### INDICATIONS:

- Effect of „glass-like heels“
- Hyperkeratosis

### CONTRAINDICATIONS:

Thin dry skin, Sensitive skin, Skin damage, Psoriasis, Allergy, Diabetes, Children's age (up to 14 years).



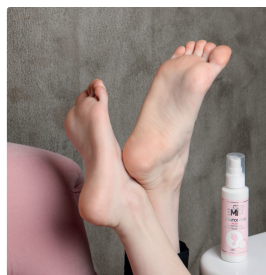
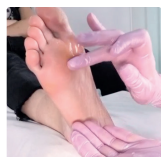
ALKALI



**Min. activity**



**Max. activity**



1. Apply keratolytic on problem areas of the skin under the film for 5-10 minutes.
2. Remove applications and process softened skin with a pedicure file or rotary file.
3. Rinse with warm water or wipe with a damp cloth. Apply moisturizer.

## TOOLS FOR PEDICURE

Durable stainless steel pedicure file. The handle that is comfortable to hold. And sandpapers of different abrasiveness.



STAINLESS STEEL PEDICURE FILE

NAIL SANDPAPERS, 10 pcs



## E.MILAC ONE STEP FOR PEDICURE

Single-phase gel polishes that do not require the use of a base and top coat. Perfectly suitable for pedicure, reducing the time of the pedicure.



# NAIL CUTICLES CARE

## CUTICLE OIL AQUA DREAM

9 ml, 15 ml

- It softens the cuticle quickly and carefully.
- Fast absorbed.
- Moisturizes the cuticle and gives a well-groomed look to the manicure.



## CUTICLE OIL BARBIE GIRL TOUCH OF NATURE

9 ml, 15 ml, 100 ml

- An updated formula of your favorite cuticle oil. Now with **98% natural ingredients**.
- Quickly, gently and effectively moisturizes cuticles.
- Instantly absorbed.



## THERAPY OIL

10 ml

Intensively moisturizing, recovering oil.

- **95.35% natural ingredients:** almond oil, grape seed oil, orange oil, and vitamin E.
- Keeps the aesthetic appearance of the nail cuticles.
- Prolongs the perfect state of a manicure.



- ✓ **ALMOND OIL** is rich in Vitamins D and E, which help soothe skin. They also protect the skin from UV impact and restore its moisture barrier.
- ✓ The **GRAPE SEED EXTRACT** is valued for its antioxidant properties.
- ✓ **AVOCADO OIL** nourishes the skin. It protects it from the harmful effects of the environment.

- ✓ **ALMOND OIL** improves skin elasticity. It nourishes and moisturizes it.
- ✓ **ORANGE OIL** promotes collagen synthesis and stimulates nail growth.
- ✓ **GRAPE SEED OIL** softens the skin and activates the metabolism in cells.
- ✓ **VITAMIN E** protects cells from damage caused by free radicals.

Apply cuticle oil, rub with massage movements.

## CUTICLE REMOVER

9 ml, 15 ml, 30 ml, 100 ml

Is used during European and Classic manicure.



## CUTICLE REMOVER AHA COMPLEX

9 ml

a cuticle remover with AHA acids and vitamin E.

- ✓ **LACTIC ACID** and **FINGER LIME EXTRACT** quickly and gently exfoliate cuticles without causing irritation or overdrying the skin.
- ✓ **GLYCERIN** cares for and softens the cuticle area, strengthens and restores the hydro-lipidic layer.
- ✓ **FAST ACTING FORMULA.** Nails look healthy and well-groomed in a matter of seconds, without harm to the nail bed.



1. Apply E.MiLac Cuticle Remover (AHA Complex) on cuticles.
2. After 2-3 minutes, remove the rough skin using a nail stick.
3. Rinse in flowing water using a brush.



# CARE SYSTEM

## UV-BLOCK CREAM

300 ml

- Photoaging protection and care. Moisturizing cream designed specifically to protect hands and feet from UV lamps and sunlight.
- New generation filters. A combination of innovative blockers of both UVA and UVB with an SPF 30.
- With care for nature. The packaging is made from mono-material and is fully recyclable.

1. Apply the cream to the hands (or feet, if used during a pedicure) before using the lamp.
2. Massage until completely absorbed.
3. Degrease the nail plate and cuticle with Eurocleanser.



## PINK SUGAR SCRUB 150 g

a delicious bouquet for gentle scrubbing and nourishment of your hands and body.

- |                   |               |                   |
|-------------------|---------------|-------------------|
| ✓ Medium abrasive | ✓ Shea Butter | ✓ Glycerin        |
| ✓ Vitamin E       | ✓ D-Panthenol | ✓ Hydrolyzed Silk |

Apply the scrub on wet skin, massage gently, then rinse with water.

 Recommended frequency of application: 1-2 times a week.



## WHIPPED BUTTER

A natural butter-based universal treatment. The Wheaped Butter has a delicate texture. It deeply hydrates and nourishes the skin.

- COCOA BUTTER and SHEA BUTTER deeply moisturize and soften the skin. Improvement of skin elasticity and firmness is guaranteed.
- DRY OILS (grapeseed, olive and sweet almond) are absorbed extremely quickly. The butter doesn't leave a residue or an unpleasant greasy feeling.
- Delicate texture that melts on contact with the skin.
- Fine glitter subtly decorates hands with a playful glow.
- **Carefully! Awakens an uncontrollable appetite!**
- Suitable for all skin types at any time of the year.

# ULTRA-MOISTURIZING SERIES FOR HAND AND BODY SKIN CARE

# CARE SYSTEM



SWEET POISON



DAILY CASUAL



TRUE ROMANCE



FIRST LADY



FEEL FREEDOM

SWEET FRAGRANCE

FRESH FRAGRANCE

## HAND AND BODY LOTION

10 ml, 200 ml, 300 ml

- Immediate-action ultra moisturizing
- Deep nourishment thanks to the formula enriched with natural oils
- Tender weightless texture
- Fast absorbed
- 7 free; cruelty-free

## SOUFFLE CREAM

50 g, 200 g

- Extra nourishing with airy texture: it penetrates deeply into the skin, acting as a mask. It improves the skin elasticity, making it smooth and velvety
- Airy texture
- 7 free; cruelty-free

## HAND AND BODY CREAM

30 ml

- Pleasant enveiling texture. It is fast absorbing, it deeply nourishes the skin, offers the feeling of 24-hour moisturizing
- Compact format. Convenient to carry around inside the cosmetics bag and take along on the trip
- 7 free; cruelty-free

		SKIN TYPE		
		NORMAL	DRY	VERY DRY
SEASON				

# SPA



## CRYSTAL SCRUBBING PASTE

150 g

- Effect from the 1st application
- Suitable for aging skin
- 7 free; cruelty-free

## 1<sup>ST</sup> STEP: PEELING



1. Perform a hygienic manicure.



2. Apply Crystal Scrubbing Paste and spread the peeling over the hand skin with gentle massaging movements.



3. Rinse off with lukewarm water.



4. Dry your hands with a towel.

## 2<sup>ND</sup> STEP: NOURISH



## PARAFFIN EFFECT MASK

150 g

- Fast long-term effect
- The mask includes a low melting point paraffin, essential and base oils: Shea butter, Vitamins A, E
- 7 free; cruelty-free.



5. Apply Paraffin Effect Mask.



6. Spread it over the skin (single layer will be enough). Wrap the hand into a cellulose film or a plastic bag. Put on a terry glove over the cellulose film.



7. In 10-15 minutes take the cellulose film off.



8. Sponge up the residues using a cloth tissue.



Recommended frequency of application: 1-2 times a week.

## COLLAGEN GLOVES AND SOCKS

one pair in a pack



## ACTIVE INGREDIENTS:

- ✓ HYDROLYZED COLLAGEN improves the elasticity of the skin, supports its tonicity, creates a protective film that prevents the loss of moisture, favors skin regeneration.
- ✓ GLYCERIN successfully fights the problem of skin dryness, facilitates the penetration of moisture to the deeper layers, nourishes, softens and smoothes the skin, restores the hydro-lipid balance.
- ✓ SHEA BUTTER has rejuvenating and antioxidant effects, helps to slow down the skin aging, protects it from UV rays, efficiently fights the problems related to the skin dryness, flaking and roughness, protects it from dehydration and drying out.
- ✓ ARGAN OIL has moisturizing, nourishing and anti-inflammatory effects, restores the hydro-lipid layer of the skin, improves its elasticity and firmness, protects it from UV radiation, favors skin renewal and rejuvenation.
- ✓ UREA has a noticeable softening and moisturizing effect, boosts cells regeneration, and prevents the drying out of cutaneous covering.

1. Clean and dry a little the hand and foot skin.  
Put on and fixate with a special adhesive tape.
2. Leave on at least for 20 minutes and take off.  
You can increase the action time depending on the skin condition.
3. Rub any product left into the skin with gentle massaging movements. Use a wet wipe to remove any excessive product.



# SPA

## MASSAGE CANDLES

A MASSAGE CANDLE IS A COSMETIC SPA PRODUCT IN THE FORM OF A SCENTED CANDLE.

A COMBINATION OF BUTTER AND OILS IS USED FOR A FULL-BODY MASSAGE.

### NATURAL COMPOSITION:

- VITAMIN E helps moisture and maintain skin firmness and elasticity;
- COCONUT AND OLIVE OILS relax and soothe. They have a moisturizing and nourishing effect on the skin;
- SHEA BUTTER saturates the upper layers of the skin with healthy fats. It promotes the production of collagen, as a result of which the skin becomes more elastic and softer.
- The candles are made from SOY WAX. It has a low melting point, so **it is impossible to get a burn**. When burning, it does not emit toxic substances and soot.

- ✓ NOURISHING AND MOISTURIZING EFFECTS.
- ✓ THE COMPONENTS INSIDE GIVE THE SKIN SMOOTHNESS AND ELASTICITY.
- ✓ SOFT SKIN AFTER SALON PROCEDURES. GENTLE AND GORGEOUS CARE WITH AMAZING FRAGRANCES.

### HOW TO USE:

1. Light a candle for 2-5 minutes to get enough organic oil.
2. Extinguish the candle, make sure that the temperature of the oil is comfortable for applying to the skin.
3. Apply warm oil to the skin of the hands, feet or body. Get a massage. If necessary, excess oil can be blotted with a paper towel. There is no need to rinse the product off with water.





# ASSORTMENT

## TOTAL ASSORTMENT



40%	Color palette
25%	Decorations
9%	Additional Liquids
8%	Care Sysytem
6.75%	Gel System
6.61%	Accessories
6.22%	Tools

## COLOR PALETTE



64%	E.MiLac
17%	Gel Paints
17%	Ultra Strong & Textone

## DECORATIONS



42%	Stickers
31%	Dusty decor
13%	Unique decor: Empasta, Gemyt gel
13%	Other

# SOULFUL MORNING

SPRING 2023  
GEL POLISH COLLECTION

409  
MINT BREEZE

410  
HONEY FLAVOUR

411  
DAYDREAMS

412  
GREEN TEA

413  
BREAKFAST AT TIFFANY'S

414  
CAMOMILE FIELD

415  
JUICY BITE

416  
SPRING RAIN

# Loveliness

SPRING 2023  
GEL POLISH COLLECTION



417

LIBRE



418

SHIVER



419

HIGHLIGHTS



420

APHRODISIA



421

TABOO



422

AIR KISS



DID NOT FIND SOMETHING?

[shop.emischool.com](https://shop.emischool.com)



**emi** YOUR MANICURE  
YOUR STYLE